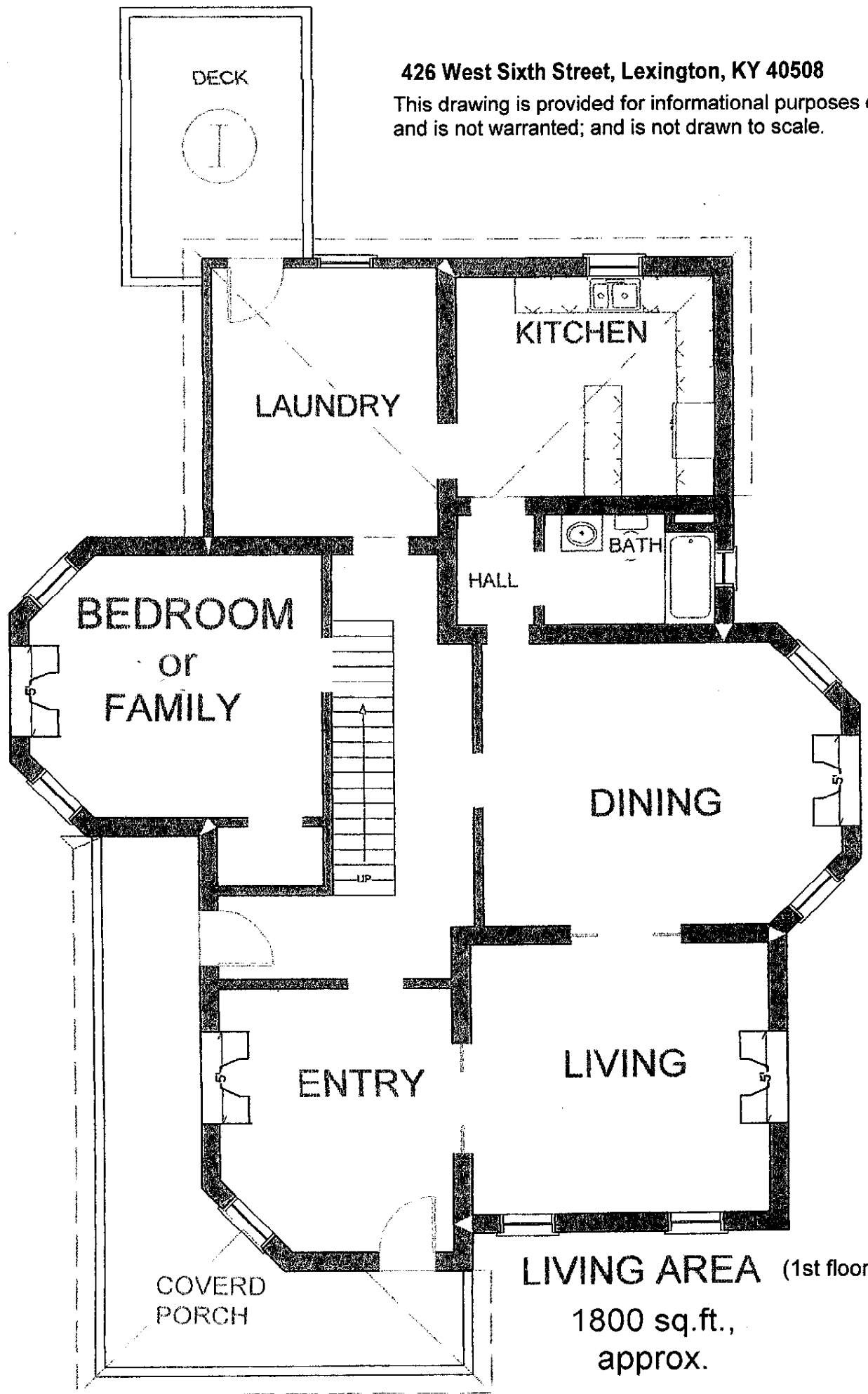


426 West Sixth Street, Lexington, KY 40508

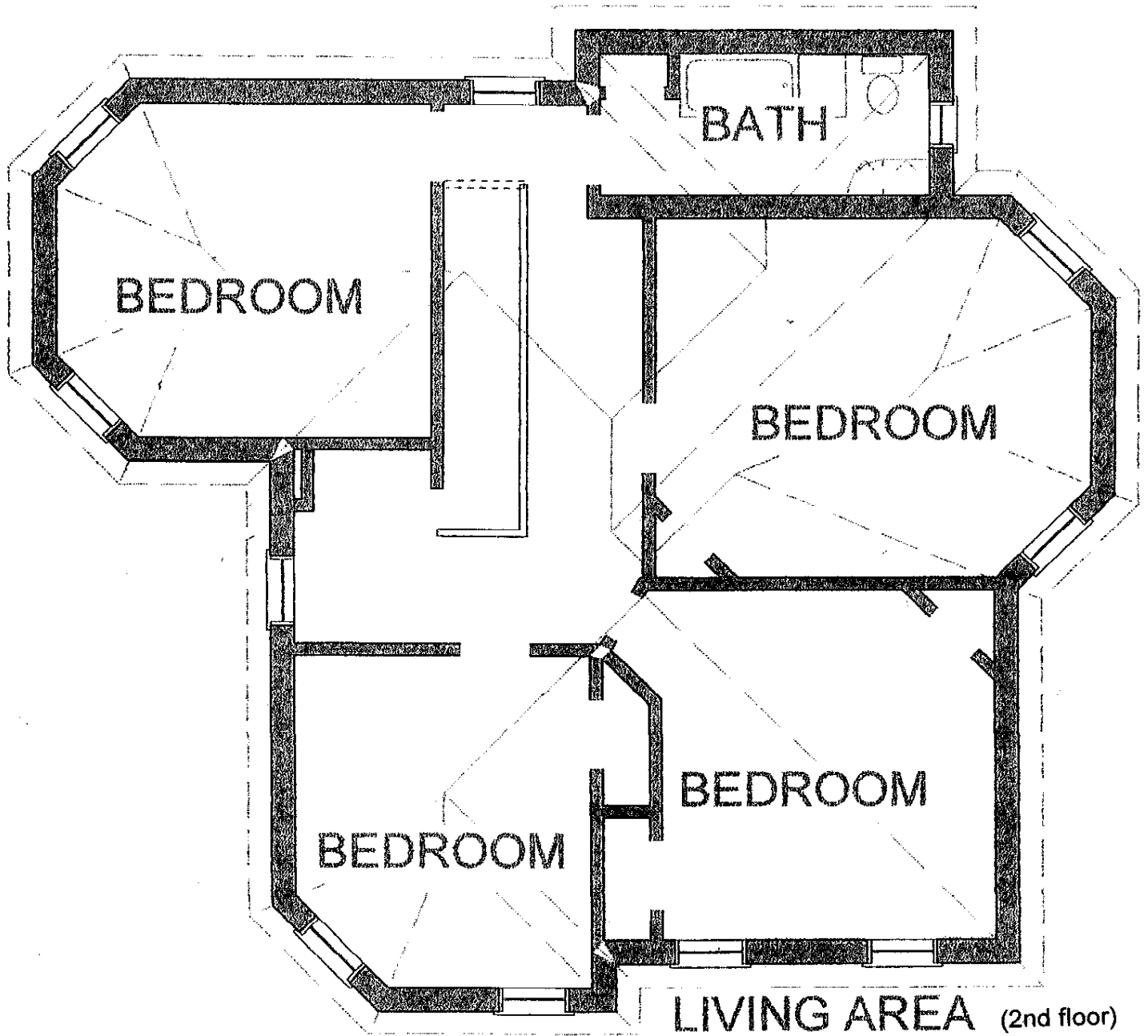
This drawing is provided for informational purposes only and is not warranted; and is not drawn to scale.



LIVING AREA (1st floor)
1800 sq.ft.,
approx.

426 West Sixth Street, Lexington, KY 40508

This drawing is provided for informational purposes only and is not warranted; and is not drawn to scale.



LIVING AREA (2nd floor)

1400 sq.ft.,
approx.